



FARM RETIREMENT AUCTION

WEDNESDAY, APRIL 17 | 10AM 2019

15751 27th St SE, Amenia, ND.
From Amenia, ND, 1 mile north on ND Hwy. 18, 2 miles east on 27th St.



AUCTIONEER'S NOTE: Major equipment begins selling at 10:00 AM. Live online bidding available on major equipment. Registration, terms, & details at SteffesGroup.com.

TRACTORS

2012 Case-IH 550HD, 4WD, suspended cab, luxury cab, heated leather, buddy seat, powershift, 6 hyd., 1000 PTO, return flow, high cap. hyd. pump, front & rear diff lock, integrated auto steer, Pro 700 display, 262 receiver, WAAS signal, HID lights, cold weather start pkg., electric mirrors, front tow cable, rear weight bracket, 800/70R38 duals, 1,656 hrs., S/NZBF128209

2014 John Deere 8245R, MFWD, IVT, ILS, premium cab, leather, buddy seat, 5 hyd., 85 gpm hyd. pump, 3 pt., quick hitch, power beyond, return flow, 540/1000 PTO, integrated auto steer, 10" color touch screen display, 4-way electric mirrors, HID lights, (12) front suitcase weights, rear wheel weights, front fenders, 380/80R38 front duals, 380/90R54 rear duals, 1,260 hrs., S/N1RW8245RKED091448

GPS EQUIPMENT

John Deere 2630 display, SF2, 1,420 hrs., S/NPCGU2UD469371

John Deere Starfire 3000 receiver, SF2, 4,211 hrs., S/NPCGT3TA695330

HARVEST EQUIPMENT

2009 John Deere 9770, STS, Contour-Master, deluxe cab, HD variable spd. feeder house, TouchSet, Y&M less display, integrated auto steer, 22-1/2' high cap. unload auger, hopper ext., fine cut chopper, small wire/round bar concaves, HID lights, HD adj. axle, 480/80R42 duals, 28L-26 rears, 889 sep. hrs., 1,193 engine hrs., S/NH09770S732854

2011 John Deere 635F HydraFlex, 35', hyd. fore/aft, low dam, finger reel, poly, AWS air bar, long poly snouts, stubble lights, 70 Series hookups, S/N1H00635FPB0741017

Unverferth header trailer, 36', 4-wheel, long pole, 7.50-10 tires, S/NA37000294

AIR DRILL

2009 Amity Fargo Aire air drill, double disc, 45", 7" space, 3"x14" rubber packer wheels, individual depth control, one run per manifold blockage monitor, side arm markers, 21.5x16.1 flotation tires, 2009 Amity 2800 SS commodity cart, twin compartment, hyd. fan, 8" hyd. fill auger, poly flighting, light pkg., offset axles, rear hitch, 23.1-26 tires, air drill S/N700081, cart S/N700079

TILLAGE EQUIPMENT

2003 Wil-Rich Quad X field cultivator, 50', 7" space, full floating hitch, 5-section fold, double spring shanks in wheel tracks, edge-on shanks, walking tandems across, single pt. depth, 9" sweeps, Wil-Rich 4-bar harrow, flotation tire pkg., S/N454935

2012 Summers SuperWeeder 70', 4-rank, hyd. adj. S-tines, auto fold, 5-bar harrows, dual wheels on main, S/NL1493

Summers SuperWeeder 70', 3-rank, hyd. adj. S-tines, auto fold, 5-bar sections, dual wheels on main

Bervac 615 soil conditioner, 42', 5-section fold, tandems on main, danish tines w/double rolling baskets

2008 Summers coulters chisel, 36', 12" space, floating hitch, updated front caster wheels, 21" concave blades, 2" carbide spikes, rock flex, walking tandems across, wing gauge wheels, rear hitch, 4-bar HD harrow, S/NH1142

Krause 4821 coulters chisel, 28', 21 shank, 16" space, 4" twisted shovels, walking tandems across, Summers HD 3-bar harrow, hyd. lift front coulters, near new harrow teeth, S/N11050804

Wil-Rich chisel plow, 33', 12" space, double spring shanks, 3-section fold, walking tandems across, set up for dry fertilizer, electric NH3 nitrolator, (3) Amity manifolds, 2" carbide spikes, rear hitch

DMI 730 ripper, 7 shank, 30" space, rear disc levelers, front mtd. independent discs, lead shanks, S/N421888

John Deere F145H plow, 6'x16", semi-mount, full coulters

ROTARY HOE

John Deere 400 rotary hoe, 30', 3 pt., cab guard, gauge wheels, S/NN00400X090791

DAY CAB SEMI TRACTOR & TRUCK

2000 Volvo VNM64T tandem axle, day cab, ISM Cummins, 370 hp., Meritor 10 spd., air ride, air slide 5th, 3:90 ratio, diff lock, cruise, dual fuel tanks, SS half fenders, 295/75R22.5 tires on steel rims, 509,539 miles

1990 Freightliner FLC tri-axle, 855 Cummins, Eaton 9 spd., diff lock, Loadline 22'x102"x66" box, hoist, roll tarp, rear controls, combo gate, sugar beet ext., air up/down pusher axle

DAY CAB SEMI TRACTOR & TRUCK

w/dual wheels, 385/65R22.5 front tires on steel rims, 11R22.5 tires on steel rims, shows 128,887 miles

HOPPER BOTTOM TRAILER

2011 Timpte Super Hopper tandem axle hopper bottom, 40'x96"x66", ag hoppers, air susp., load gauge, Shur-Co 3500 electric roll tarp w/wireless remote, SS front corners, double row LED lights, 295/75R22.5 tires on (4) aluminum rims

SPRAYER

2010 Flexi-Coil 68XL pull-type sprayer, 90' susp. boom, 20" space, 1,600 gal. poly tank, hyd. pump, chemical mix cone, triple nozzle bodies, rinse tank, 5-section shut-off, Raven auto rate controller, 380/85R46 tires, S/NYAT041165

FERTILIZER & NH3 EQUIPMENT

2013 Fast 8224 liquid fertilizer side dresser, 36x22", 5-section rear fold wings, 2,400 gal. tank, hyd. pump, 5-section shut-off, Clymer spring loaded ripple coulters, set up for Raven controller, but not included, 380/90R46 tires, S/N822448350813

(2) 2012 Enduraplas 3,000 gal. liquid fertilizer tanks, 3" fitting, stored inside, used for 28% fertilizer

DMI PT3 pull-type NH3 applicator, 40', 3-section fold, 31 shank, 15" space, hyd. nitrolator, rear hitch, S/N9198

NH3 tank on 4-wheel running gear, 1,000 gal., torsion susp., recent paint

HOPPER BINS & AUGERS

(5) Friesen 2,000 bu. hopper bins, 16' diameter, ladder

2011 Westfield MK100-61 auger, 61'x10", low pro swing hopper, hyd. lift, 540 PTO, reverser, S/N236993

2008 Westfield TF80-31 loadout auger, 31'x8", 7-1/2 hp., 1 phase, on transport, S/N194283

Westgo 831 loadout auger, 31'x8", brush flighting, 540 PTO, on transport, used for seed

FUEL & POLY TANKS

Upright fuel tank, 10,000 gal., bottom fill, 110v Gasboy pump

Fuel tank, 1,000 gal., 110v Gasboy pump

FUEL & POLY TANKS

Fuel tank, 500 gal., 110v Tokheim pump

DEF tank, 275 gal., 12v, SS pump, nozzle & hose, approx. 75 gal. of fluid

(3) Poly tanks, 1,500 gal., 2" valve, one tank was New in 2018

Poly tank, 100 gal.

OTHER EQUIPMENT

Rust-Built box blade, 12', hyd. lift & tilt

Shop-built header mover, 3 pt.

Gearmore 350P broadcast spreader, 3 pt., Cat 1, 540 PTO

Concord soil sampling probe, 3 pt., 120 gal. poly tank, 2" fitting on top

2004 Honda Foreman Rubicon 500 ATV, 4x4, Hondamatic, front & rear racks, rear hitch, 4,043 miles

FARM SUPPORT ITEMS

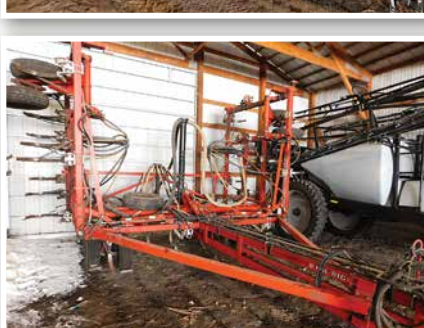
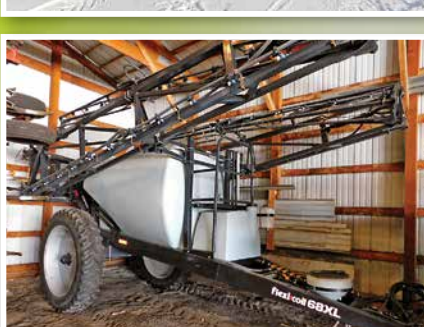
John Deere 3 pt. quick hitch, Cat 3, adj. width

Asst. shovels for Summers chisel plow

Summers tricycle wheel assembly off coulters chisel, complete w/frame, cylinder & hubs

(2) Transfer pumps, 2", Honda 5.5 hp. & Briggs & Stratton 3.5 hp. motors

Shop-built hopper on stand for unloading seed totes



KENT & PATTY SMITH / 701.238.2526
or Brad Olstad at Steffes Group, 701.237.9173 or 701.238.0240

SteffesGroup.com

Steffes Group, Inc., 2000 Main Avenue East, West Fargo, ND 58078 | 701.237.9173

Scott Steffes ND81, Brad Olstad ND319, Bob Steffes ND82, Max Steffes ND999, Justin Ruth ND2019, Ashley Huhn ND843, Eric Gabrielson ND890, Randy Kath ND894, Scott Gillespie ND1070, Shelly Weinzelt ND963



TERMS: All items sold as is where is. Payment of cash or check must be made sale day before removal of items. Statements made auction day take precedence over all advertising. \$35 documentation fee applies to all titled vehicles. Titles will be mailed. Canadian buyers need a bank letter of credit to facilitate border transfer.

